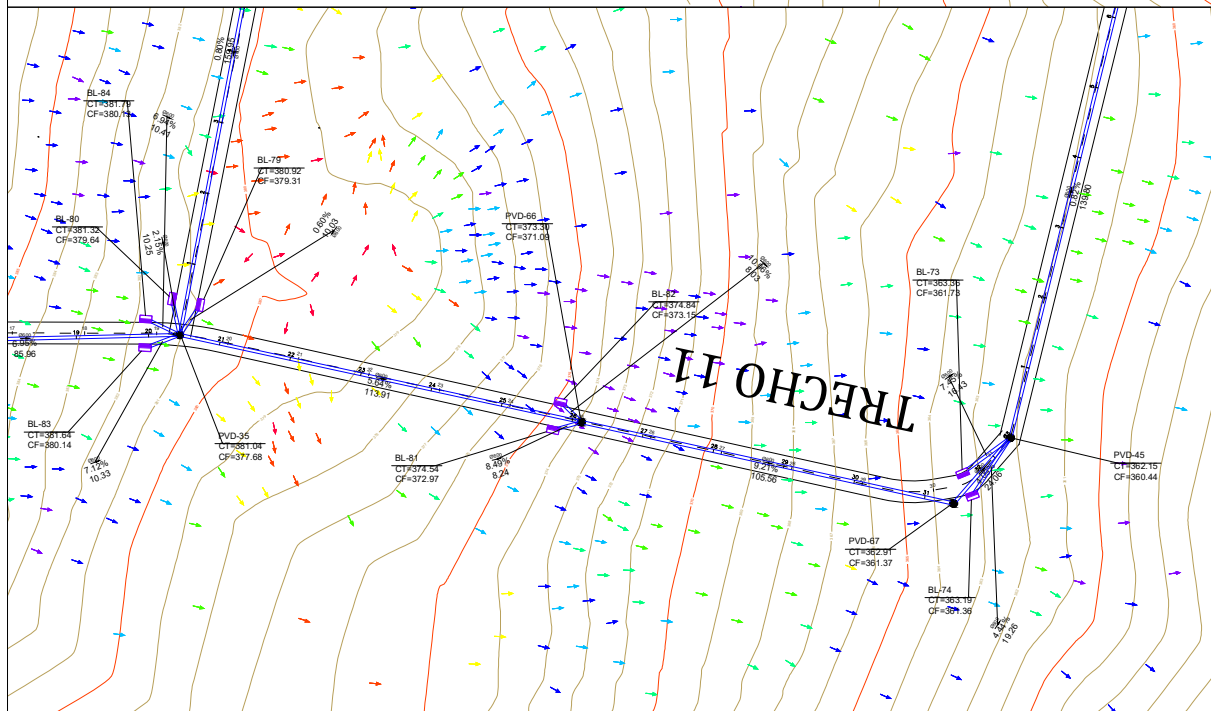
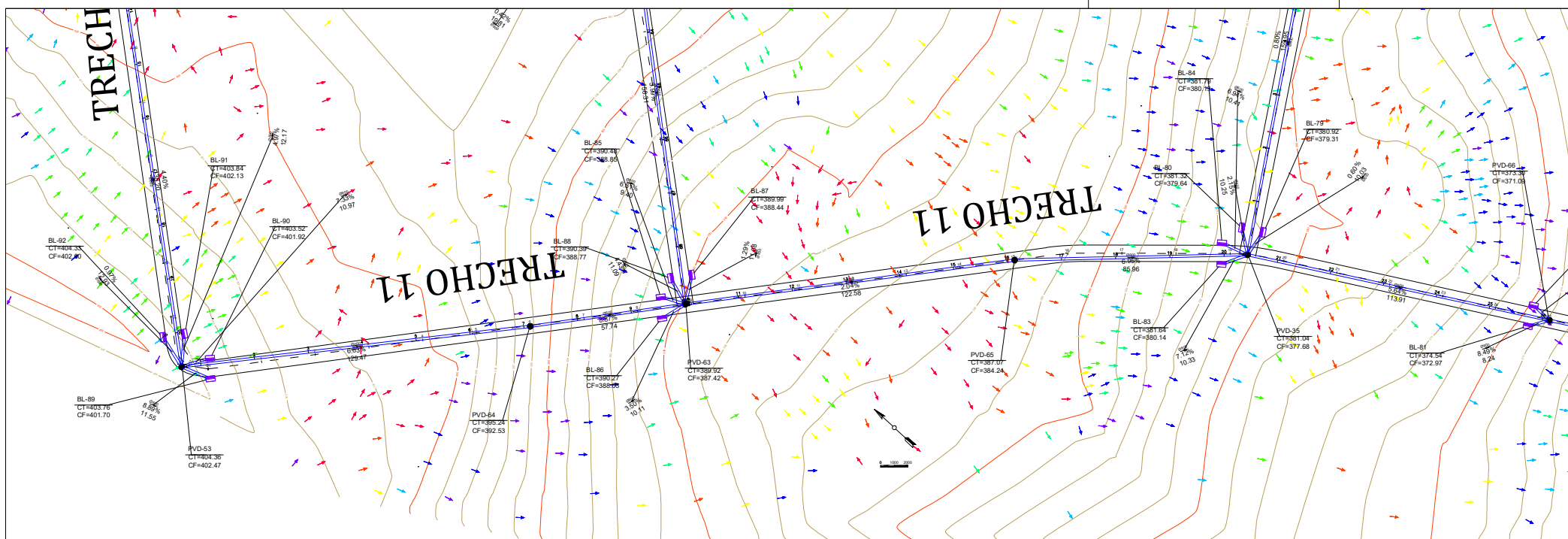
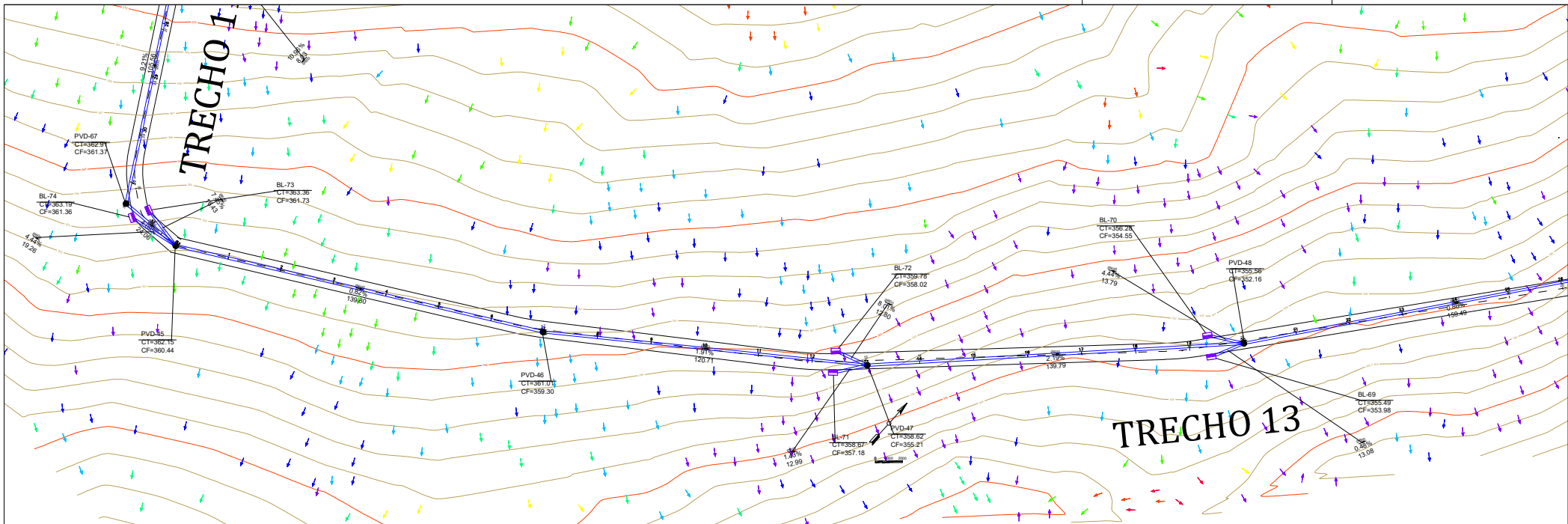


Inserido ao protocolo 24.570.111-0 por: **Maria Augusta Gadens** em: 29/04/2026 11:37. A autenticidade deste documento pode ser validada no endereço: <https://www.esprotocolo.pr.gov.br/siweb/validarDocumento> com o código: 48f9016b07d2a640149331c61a461c2c

[illegible]





Engenharia Civil e
Engenharia de Segurança do Trabalho

Tel.: (41) 9 9881-3622
End: Rua Porto Alegre, nº 5158, Zona DE
Cidade: Foz de Iguaçu - Paraná
E-mail: scdp@scdp.com.br
Site: www.scdp.com.br

PROJETO DE PAVIMENTAÇÃO

PROJETO DE PAVIMENTAÇÃO - VILA RURAL
VILA RURAL FLORENÇO BARRA

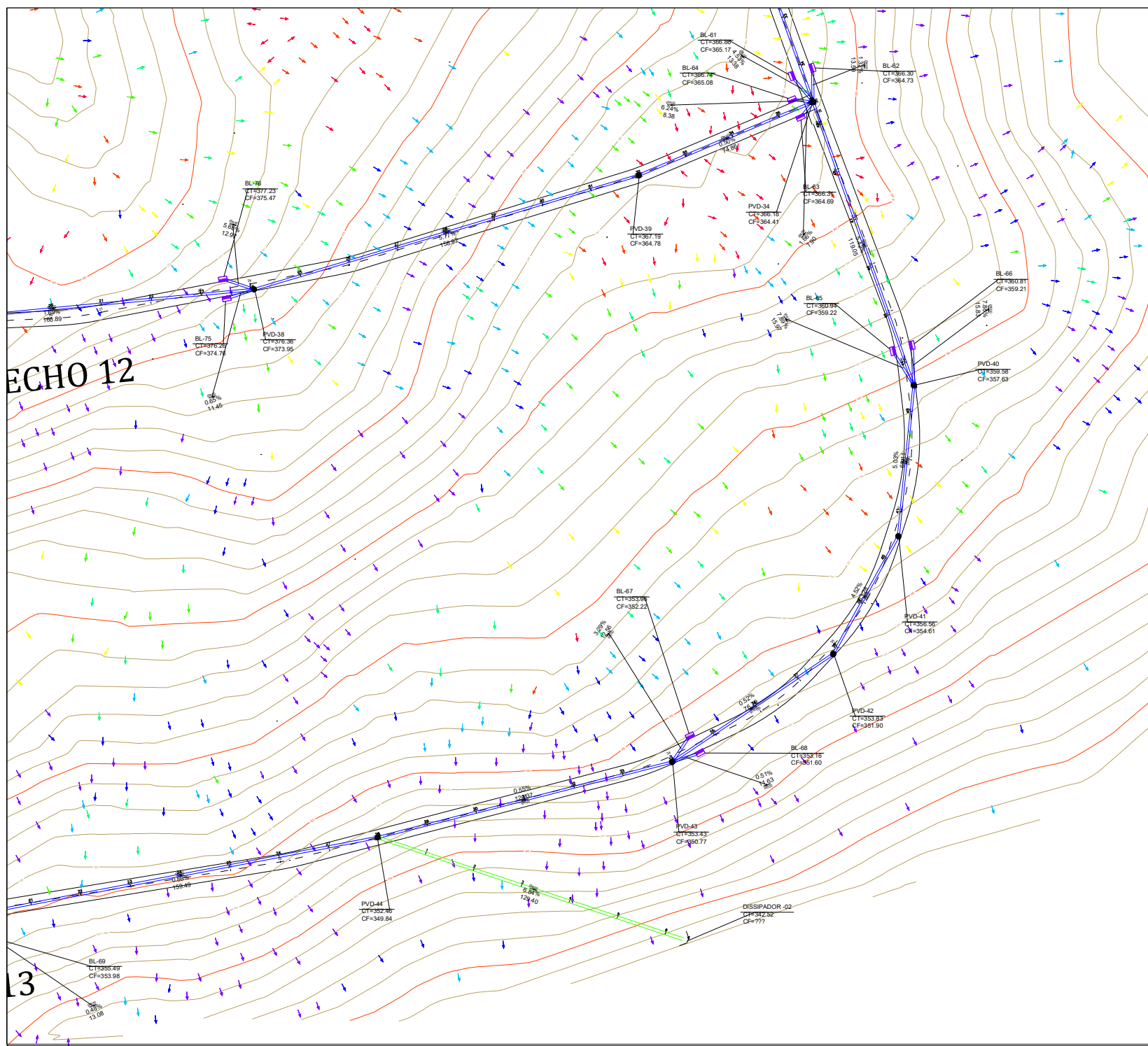
RENANEM RUA 13
LARANJEIRA

PREFEITURA MUNICIPAL DE CIDADE GAUCHA

RUA JOSÉ CARLOS KUMBIKOW DE OLIVEIRA, 2204

Sheila
Cristina Dias

01/02





Engenharia de Segurança do Trabalho

Projeto de Pavimentação

Projeto de Pavimentação - Vila Rural

Vila Rural, Florença, BA

Projeto de Pavimentação

PROJETO DE PAVIMENTAÇÃO

PROJETO DE PAVIMENTAÇÃO - VILA RURAL

VILA RURAL, FLORENÇA, BA

02/02

PROJETO DE PAVIMENTAÇÃO

PROJETO DE PAVIMENTAÇÃO - VILA RURAL

VILA RURAL, FLORENÇA, BA

02/02

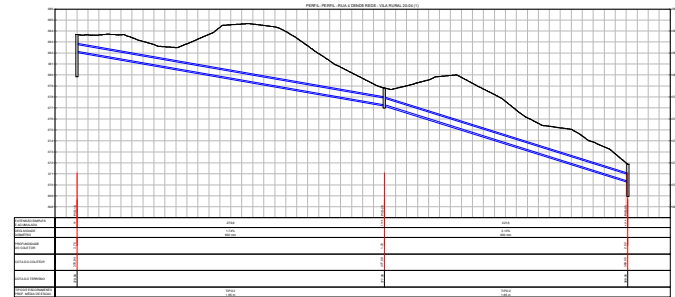
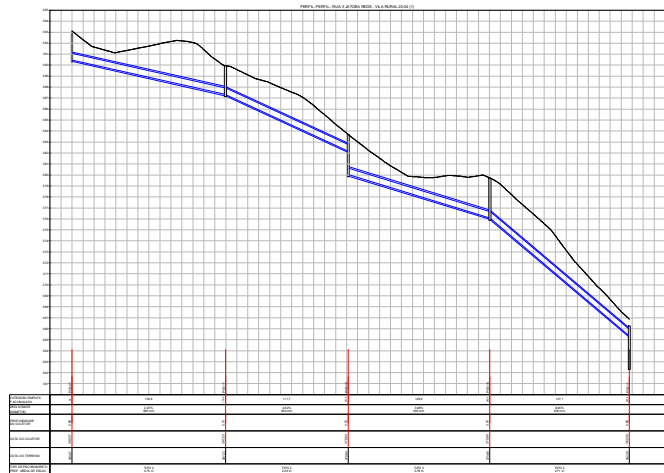
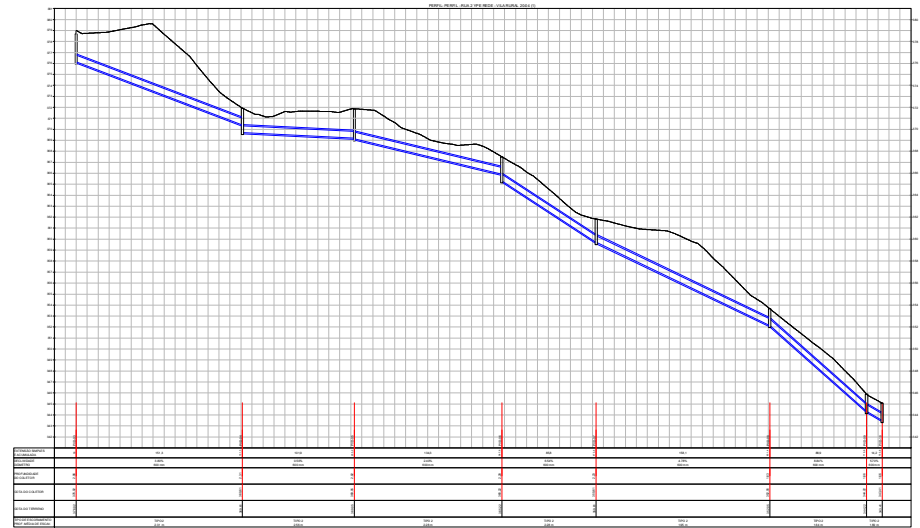
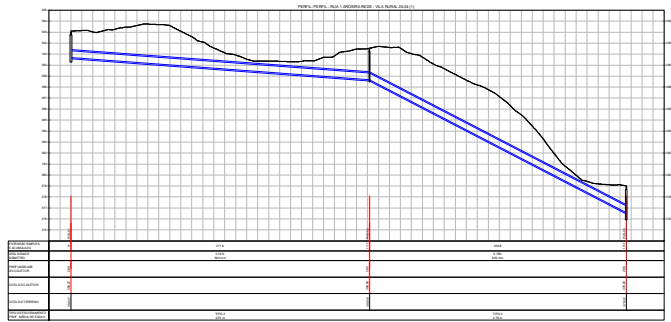
PROJETO DE PAVIMENTAÇÃO

PROJETO DE PAVIMENTAÇÃO - VILA RURAL

VILA RURAL, FLORENÇA, BA

02/02







Engenharia Civil e
Engenharia de Segurança do Trabalho

Tel.: (41) 9 9981-2622
End.: Rua Porto Alegre, nº 5148, Zona DE
Cidade de Curitiba - Paraná
E-mail: scdpc@scdpc.com.br
Site: www.scdpc.com.br

PROJETO DE PAVIMENTAÇÃO

PROJETO DE PAVIMENTAÇÃO - VILA RURAL
VILA RURAL FLORENÇA BARRA

ORÇAMENTO
CUSTO TOTAL: R\$ 1.000,00

PREÇO UNITÁRIO: R\$ 100,00

PREÇO TOTAL: R\$ 1.000,00

01/05

PREFEITURA MUNICIPAL DE CIDADE GAUCHA

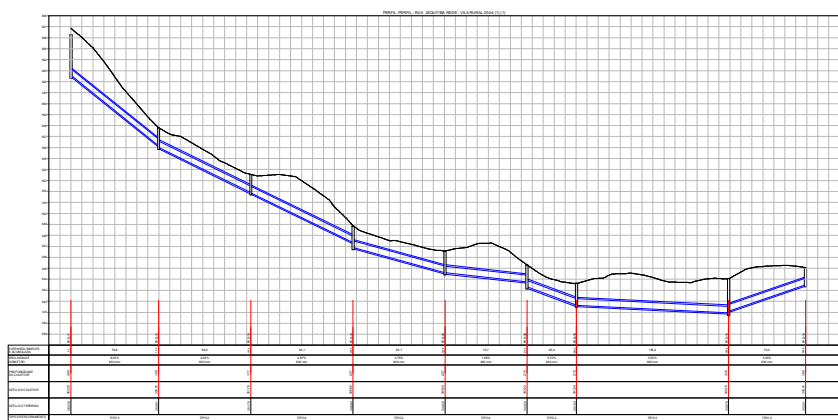
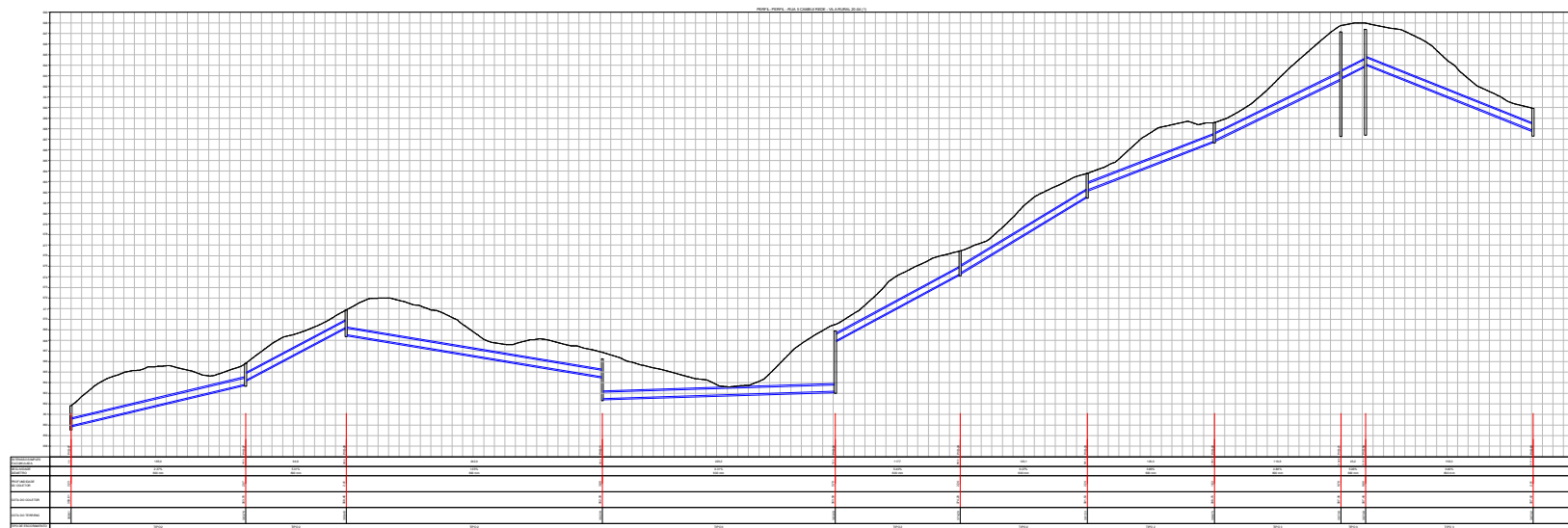
RUA JOSELO KURTSCHEK DE OLIVEIRA, 2304

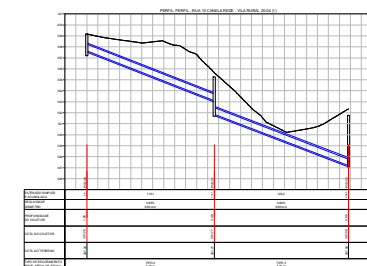
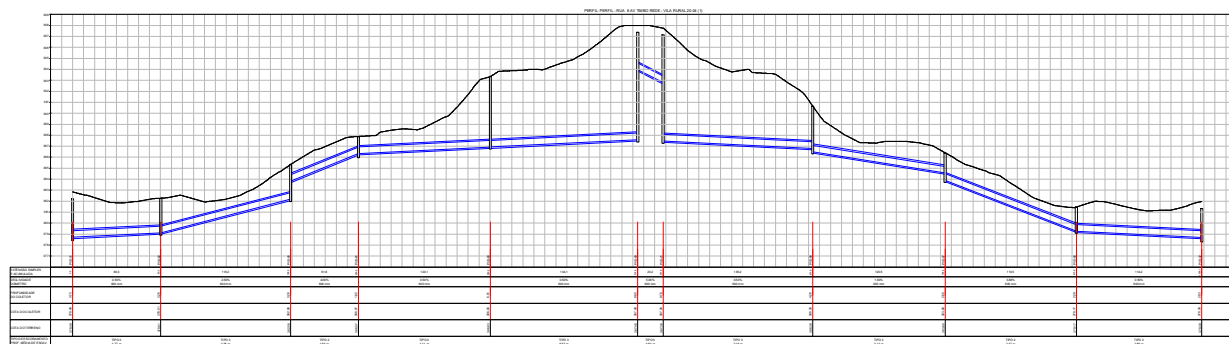
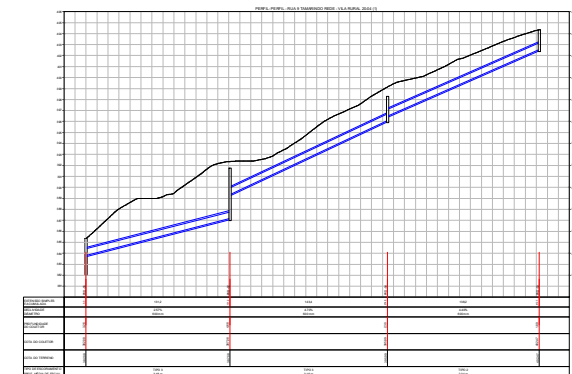
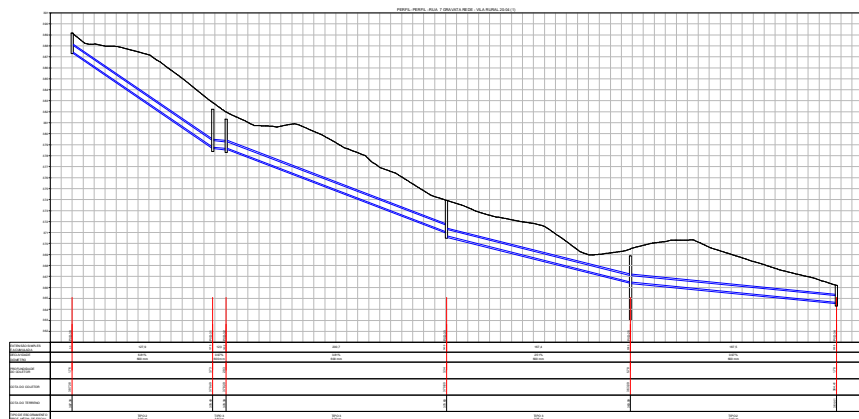
CEP: 81560-000

PROJETO DE PAVIMENTAÇÃO

PROJETO DE PAVIMENTAÇÃO

PROJETO DE PAVIMENTAÇÃO

[illegible]





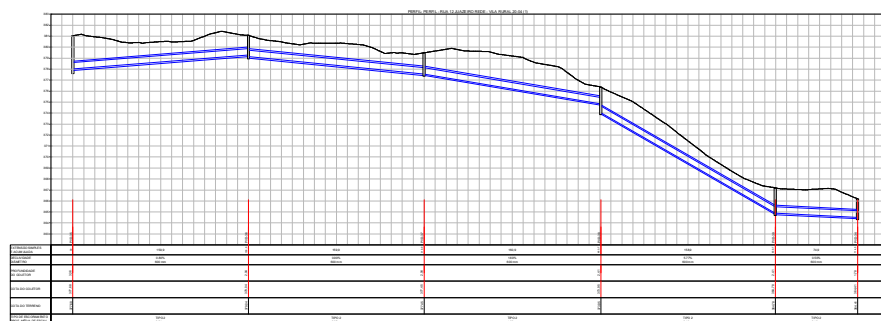
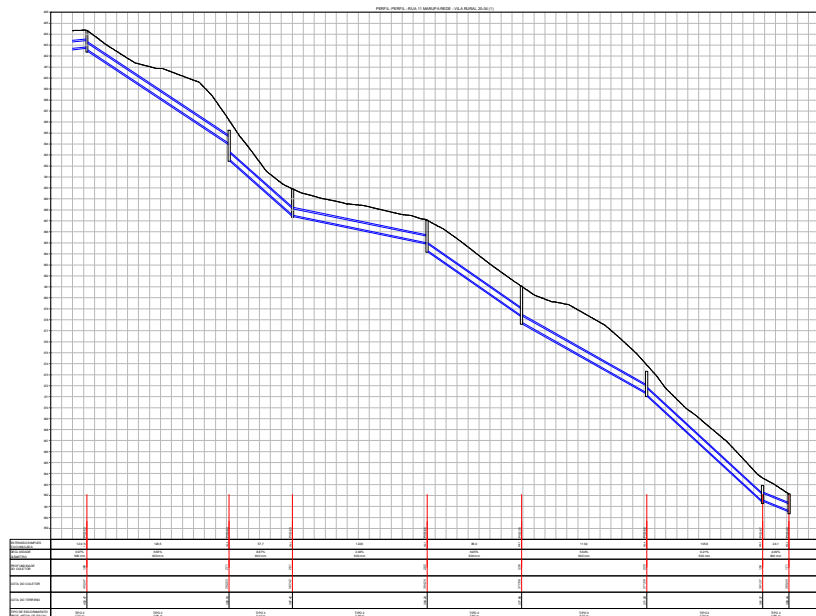
Engenharia Civil e
Engenharia de Segurança do Trabalho
Tel.: (41) 9 9981-2622
End.: Rua Porto Alegre, nº 5148, Zona DE
Cidade: Curitiba - PR
E-mail: scdpc@scdpc.com.br
Site: www.scdpc.com.br

PROJETO DE PAVIMENTAÇÃO
PROJETO DE PAVIMENTAÇÃO: VILA RURAL
VILA RURAL, FLORESTA BARRA
- DRENAGEM
SEÇÃO TRANSVERSAL

PREFEITURA MUNICIPAL DE CIDADE GAUCHA
RUA JOSELO KURTIOUX DE OLIVEIRA, 3204
Cidade: Curitiba - PR

Shella
Cristina D. da Silva
Engenheira Civil

03/05





Engenharia Civil e
Engenharia de Segurança do Trabalho

Tel.: (44) 9 9981-3622
End.: Rua Porto Alegre, nº 5148, Zona DE
Cidade de Curitiba - Paraná
E-mail: scdpcr@hotmail.com
Resp. Téc.: Sheila Cristina Dias-CREA-PR 136316/O

PROJETO DE PAVIMENTAÇÃO

PROJETO DE PAVIMENTAÇÃO: VILA RURAL
VILA RURAL FLORENÇA BARRA

OPERAÇÃO
DRENAGEM
SEÇÃO TRANSVERSAL

PROJETO DE PAVIMENTAÇÃO: VILA RURAL
VILA RURAL FLORENÇA BARRA

OPERAÇÃO
DRENAGEM
SEÇÃO TRANSVERSAL

PREFEITURA MUNICIPAL DE CIDADE GAUCHA
RUA JOSELO KURTIOX DE OLIVEIRA, 3204

Sheila
Cristina Dias

Assinatura digital
Data: 2008.04.23
Hora: 14:00:00

04/05

IL-40	CT=360.39 CF=360.31	1.67
IL-41	CT=364.95 CF=365.23	1.63
IL-42	CT=381.06 CF=383.22	1.94
IL-43	CT=386.42 CF=366.68	1.74
IL-44	CT=376.73 CF=368.61	1.92
IL-45	CT=366.12 CF=364.52	1.63
IL-46	CT=366.85 CF=365.23	1.65
IL-47	CT=369.09 CF=366.31	2.78
IL-48	CT=366.76 CF=362.32	2.44
IL-49	CT=366.49 CF=366.65	1.83
IL-50	CT=368.48 CF=366.76	1.72
IL-51	CT=363.78 CF=362.13	1.66
IL-52	CT=367.77 CF=362.15	1.62
IL-53	CT=381.26 CF=365.23	2.74
IL-54	CT=378.53 CF=376.32	2.81
IL-55	CT=374.08 CF=372.78	1.89
IL-56	CT=371.44 CF=372.79	1.62
IL-57	CT=369.04 CF=367.46	1.98
IL-58	CT=366.55 CF=365.85	1.70
IL-59	CT=370.35 CF=368.56	1.79
IL-60	CT=369.52 CF=365.30	1.62
IL-61	CT=366.96 CF=365.17	1.69
IL-62	CT=365.30 CF=364.73	1.87
IL-63	CT=368.13 CF=364.69	1.62
IL-64	CT=366.74 CF=365.08	1.86
IL-65	CT=360.94 CF=360.22	1.72
IL-66	CT=360.81 CF=359.21	1.61
IL-67	CT=363.96 CF=362.21	1.74
IL-68	CT=363.16 CF=361.60	1.56
IL-69	CT=355.49 CF=356.98	1.51
IL-70	CT=362.28 CF=364.45	1.73
IL-71	CT=358.67 CF=357.18	1.49
IL-72	CT=360.67 CF=360.03	1.77
IL-73	CT=363.36 CF=361.73	1.63
IL-74	CT=361.19 CF=361.36	1.82
IL-75	CT=376.76 CF=374.76	1.50
IL-76	CT=377.23 CF=374.47	1.76
IL-77	CT=360.81 CF=360.70	1.50
IL-78	CT=381.38 CF=379.41	1.97
IL-79	CT=360.92 CF=370.31	1.61
IL-80	CT=381.32 CF=379.64	1.68
IL-81	CT=374.54 CF=373.27	1.57
IL-82	CT=374.84 CF=373.15	1.69
IL-83	CT=381.64 CF=380.14	1.49
IL-84	CT=381.79 CF=380.13	1.66
IL-85	CT=360.48 CF=368.85	1.64
IL-86	CT=360.27 CF=360.63	1.64
IL-87	CT=369.96 CF=368.44	1.55
IL-88	CT=360.39 CF=360.77	1.62
IL-89	CT=403.76 CF=401.70	2.05
IL-90	CT=403.52 CF=401.84	1.80
IL-91	CT=402.81 CF=402.13	1.72
IL-92	CT=404.33 CF=402.60	1.72
IL-93	CT=362.59 CF=360.90	1.68
IL-94	CT=360.18 CF=360.62	1.56
IL-95	CT=361.94 CF=360.25	1.68
IL-96	CT=360.82 CF=360.16	1.66

BL-07	Cf=366.87 C=365.22	1.65
BL-08	Cf=366.25 C=364.77	1.48
BL-09	Cf=367.75 C=366.05	1.80
BL-100	Cf=368.65 C=367.19	1.68
BL-101	Cf=369.27 C=367.75	1.49
BL-102	Cf=369.94 C=369.33	1.61
DSSP-AD3	Cf=369.10 C=367.47	1.63
BL-104	Cf=368.87 C=367.28	1.59
BL-105	Cf=367.91 C=366.29	1.62
BL-106	Cf=367.62 C=366.28	1.63
BL-107	Cf=368.75 C=367.15	1.60
BL-108	Cf=368.70 C=367.13	1.56
BL-109	Cf=376.73 C=375.65	1.65
BL-110	Cf=375.65 C=375.06	1.60
BL-111	Cf=382.88 C=381.14	1.74
BL-112	Cf=382.32 C=380.75	1.58
BL-113	Cf=381.68 C=380.33	1.65
BL-114	Cf=381.57 C=380.04	1.53
BL-115	Cf=387.13 C=385.39	1.73
BL-116	Cf=386.62 C=385.03	1.57
BL-117	Cf=388.21 C=386.52	1.69
BL-118	Cf=387.65 C=386.11	1.57
BL-119	Cf=387.67 C=386.27	1.70
BL-120	Cf=387.78 C=386.25	1.57
BL-121	Cf=379.91 C=378.32	1.59
BL-122	Cf=379.88 C=378.56	1.49
DSSP-AD2_01	Cf=378.59 C=377.97	0.00
DSSP-AD2_02	Cf=342.52 C=???	0.00
PvD-01	Cf=393.05 C=391.37	2.68
PvD-02	Cf=391.54 C=388.58	2.95
PvD-03	Cf=379.69 C=376.02	2.96
PvD-04	Cf=376.02 C=369.61	2.31
PvD-05	Cf=371.87 C=369.05	2.82
PvD-06	Cf=367.50 C=365.22	2.28
PvD-07	Cf=361.84 C=359.61	2.23
PvD-08	Cf=353.67 C=352.05	1.63
PvD-09	Cf=345.88 C=344.22	1.66
PvD-10	Cf=343.57 C=342.41	1.66
PvD-11	Cf=366.27 C=362.39	3.88
PvD-12	Cf=367.80 C=359.61	1.89
PvD-13	Cf=363.65 C=351.78	2.07
PvD-14	Cf=348.87 C=346.80	2.07
PvD-15	Cf=344.07 C=340.78	3.28
PvD-16	Cf=343.64 C=341.54	2.10
PvD-17	Cf=369.95 C=367.23	2.73
PvD-18	Cf=363.69 C=379.94	3.75
PvD-19	Cf=379.73 C=375.98	3.75
PvD-20	Cf=375.82 C=377.09	1.72
PvD-21	Cf=367.15 C=367.36	9.78
PvD-22	Cf=388.57 C=386.75	1.83
PvD-23	Cf=376.78 C=381.53	2.24
PvD-24	Cf=368.45 C=374.20	2.24
PvD-25	Cf=368.87 C=369.69	5.78
PvD-26	Cf=350.87 C=360.65	2.41

PvD-27	CT=36583 CF=34676	2.07
PvD-28	CT=34057 CF=34450	2.07
PvD-29	CT=34331 CF=34322	2.10
PvD-30	CT=38015 CF=36738	1.76
PvD-31	CT=38222 CF=37849	3.73
PvD-32	CT=31332 CF=37839	2.93
PvD-33	CT=37303 CF=37680	3.34
PvD-34	CT=36618 CF=36441	1.78
PvD-35	CT=38104 CF=37768	3.36
PvD-36	CT=38108 CF=37904	2.04
PvD-37	CT=37949 CF=37745	2.04
PvD-38	CT=37936 CF=37955	2.41
PvD-39	CT=36719 CF=36478	2.41
PvD-40	CT=36058 CF=36763	1.95
PvD-41	CT=36656 CF=36461	1.95
PvD-42	CT=35383 CF=35190	1.93
PvD-43	CT=35343 CF=35077	2.66
PvD-44	CT=35246 CF=34815	2.62
PvD-45	CT=36215 CF=36044	1.71
PvD-46	CT=36101 CF=36930	1.71
PvD-47	CT=35862 CF=35921	3.40
PvD-48	CT=35565 CF=35216	3.40
PvD-49	CT=36011 CF=36728	1.90
PvD-50	CT=36047 CF=36857	1.90
PvD-51	CT=36526 CF=36177	3.49
PvD-52	CT=36175 CF=36708	4.68
PvD-53	CT=40436 CF=40247	1.89
PvD-54	CT=38629 CF=36959	2.30
PvD-55	CT=38533 CF=38206	3.26
PvD-56	CT=36065 CF=36639	4.26
PvD-57	CT=36640 CF=36380	2.60
PvD-58	CT=36146 CF=37017	2.29
PvD-59	CT=36738 CF=36748	9.90
PvD-60	CT=39334 CF=36863	6.51
PvD-61	CT=38789 CF=38007	1.62
PvD-62	CT=38227 CF=37801	3.26
PvD-63	CT=38892 CF=38742	2.51
PvD-64	CT=38524 CF=38263	2.71
PvD-65	CT=38070 CF=38424	2.82
PvD-66	CT=37430 CF=37109	2.20
PvD-67	CT=36291 CF=36137	1.54

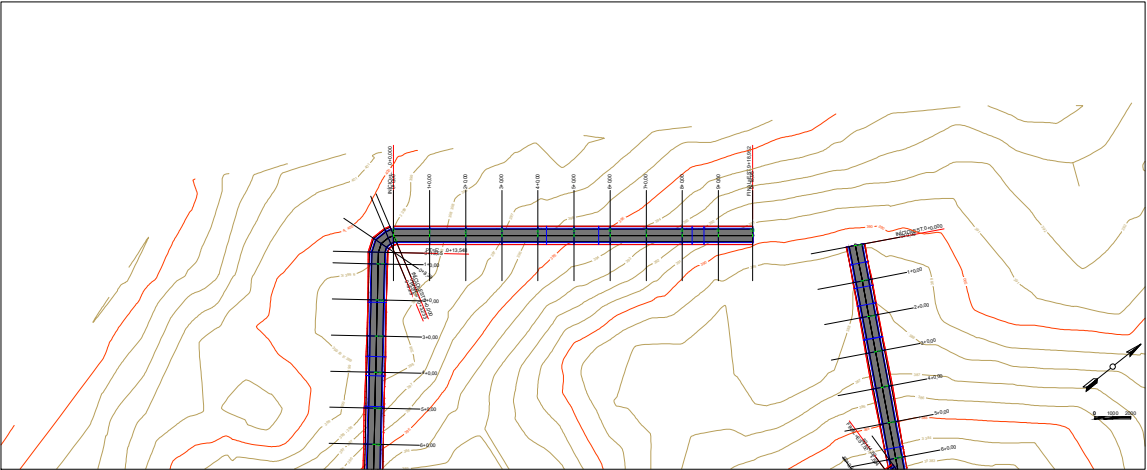
Inserido ao protocolo 24.579.113-0 por: Maria Augusta Gadens em: 29/04/2026 11:37. A autenticidade deste documento pode ser validada no endereço: https://www.aprotocolo.br.gov.br/pt/validar_documento com o código: 69a3d8ba58a04679958c2a00f01204

TRECHO -60	PVD-58 / PVD-32	0.60	114.2	0.50%
TRECHO -61	PVD-59 / PVD-21	0.60	23.2	5.06%
TRECHO -62	PVD-59 / PVD-60	0.60	134.1	0.50%
TRECHO -63	PVD-60 / PVD-61	0.60	120.1	0.50%
TRECHO -64	PVD-61 / PVD-55	0.60	61.8	4.09%
TRECHO -65	PVD-55 / PVD-62	0.60	118.2	2.59%
TRECHO -66	PVD-62 / PVD-31	0.60	80.3	0.50%
TRECHO -67	PVD-59 / PVD-63	0.60	158.3	3.99%
TRECHO -68	PVD-53 / PVD-64	0.60	129.5	6.63%
TRECHO -69	PVD-64 / PVD-63	0.60	57.7	8.87%
TRECHO -70	PVD-63 / PVD-65	0.60	122.6	2.04%
TRECHO -71	PVD-65 / PVD-35	0.60	86.0	6.95%
TRECHO -72	PVD-35 / PVD-66	0.60	113.9	5.64%
TRECHO -73	PVD-66 / PVD-67	0.60	105.6	9.21%
TRECHO -74	PVD-67 / PVD-45	0.60	24.1	4.09%
TRECHO -75	BL-1 / PVD-01	0.60	6.8	4.48%
TRECHO -76	BL-2 / PVD-01	0.60	7.7	0.47%
TRECHO -77	BL-3 / PVD-02	0.60	6.8	0.45%
TRECHO -78	BL-4 / PVD-02	0.60	6.9	2.58%
TRECHO -79	BL-5 / PVD-03	0.60	12.8	0.41%
TRECHO -80	BL-6 / PVD-03	0.60	13.0	1.96%
TRECHO -81	BL-7 / PVD-03	0.60	13.1	0.39%
TRECHO -82	BL-8 / PVD-03	0.60	13.4	0.49%
TRECHO -83	BL-9 / PVD-04	0.60	9.4	8.07%
TRECHO -84	BL-10 / PVD-04	0.60	9.3	3.73%
TRECHO -85	BL-11 / PVD-05	0.60	8.9	1.49%
TRECHO -86	BL-12 / PVD-05	0.60	9.8	0.49%
TRECHO -87	BL-13 / PVD-06	0.60	11.1	6.97%
TRECHO -88	BL-14 / PVD-06	0.60	11.1	4.03%
TRECHO -89	BL-15 / PVD-07	0.60	10.2	4.39%
TRECHO -90	BL-16 / PVD-07	0.60	11.2	1.40%
TRECHO -91	BL-17 / PVD-08	0.60	11.2	7.89%
TRECHO -92	BL-18 / PVD-08	0.60	11.3	6.82%
TRECHO -93	BL-19 / PVD-09	0.60	13.1	10.84%
TRECHO -94	BL-20 / PVD-09	0.60	13.7	10.18%
TRECHO -95	PVD-16 / BL-21	0.60	9.0	0.46%
TRECHO -96	PVD-16 / BL-22	0.60	8.9	2.92%
TRECHO -97	PVD-28 / BL-23	0.60	11.4	0.48%
TRECHO -98	PVD-28 / BL-24	0.60	11.3	3.51%
TRECHO -99	PVD-13 / BL-25	0.60	16.9	5.02%
TRECHO -100	PVD-13 / BL-26	0.60	15.9	2.55%
TRECHO -101	PVD-05 / BL-27	0.60	13.5	7.71%
TRECHO -102	PVD-05 / BL-28	0.60	13.9	7.84%
TRECHO -103	PVD-20 / BL-29	0.60	15.8	2.06%
TRECHO -104	PVD-20 / BL-30	0.60	15.1	6.09%
TRECHO -105	BL-31 / PVD-18	0.60	12.9	2.70%
TRECHO -106	BL-32 / PVD-18	0.60	14.1	0.49%
TRECHO -107	PVD-07 / BL-33	0.60	17.4	7.49%
TRECHO -108	PVD-07 / BL-34	0.60	17.1	9.13%
TRECHO -109	PVD-27 / BL-35	0.60	12.2	5.91%
TRECHO -110	PVD-27 / BL-36	0.60	12.7	9.04%
TRECHO -111	PVD-11 / BL-37	0.60	11.7	0.49%
TRECHO -112	PVD-11 / BL-38	0.60	12.1	4.32%
TRECHO -113	BL-39 / PVD-01	0.60	10.6	4.39%
TRECHO -114	BL-40 / PVD-01	0.60	10.6	4.60%
TRECHO -115	PVD-18 / BL-41	0.60	16.5	7.59%
TRECHO -116	PVD-18 / BL-42	0.60	16.6	7.31%
TRECHO -117	PVD-11 / BL-43	0.60	17.4	8.65%
TRECHO -118	PVD-11 / BL-44	0.60	17.4	9.48%

TRECHO -119	PVD-11 / BL-45	0.60	13.6	0.49%
TRECHO -120	PVD-11 / BL-46	0.60	12.8	0.49%
TRECHO -121	BL-47 / PVD-25	0.60	13.0	0.61%
TRECHO -122	BL-48 / PVD-25	0.60	12.8	0.53%
TRECHO -123	BL-49 / PVD-30	0.60	9.9	8.92%
TRECHO -124	PVD-30 / BL-50	0.60	9.7	8.10%
TRECHO -125	BL-51 / PVD-31	0.60	12.4	7.46%
TRECHO -126	BL-52 / PVD-31	0.60	13.1	7.30%
TRECHO -127	PVD-32 / BL-53	0.60	14.9	0.51%
TRECHO -128	PVD-32 / BL-54	0.60	15.3	0.49%
TRECHO -129	BL-55 / PVD-33	0.60	9.9	0.91%
TRECHO -130	BL-56 / PVD-33	0.60	9.5	5.36%
TRECHO -131	BL-57 / PVD-25	0.60	10.5	0.48%
TRECHO -132	BL-58 / PVD-25	0.60	11.1	0.51%
TRECHO -133	BL-59 / PVD-25	0.60	12.1	5.92%
TRECHO -134	BL-60 / PVD-25	0.60	12.7	3.66%
TRECHO -135	BL-61 / PVD-34	0.60	13.4	4.53%
TRECHO -136	BL-62 / PVD-34	0.60	13.6	1.32%
TRECHO -137	BL-63 / PVD-34	0.60	7.9	1.66%
TRECHO -138	BL-64 / PVD-34	0.60	8.4	6.24%
TRECHO -139	BL-65 / PVD-40	0.60	16.0	7.89%
TRECHO -140	BL-66 / PVD-40	0.60	15.8	7.88%
TRECHO -141	BL-67 / PVD-43	0.60	12.6	3.29%
TRECHO -142	BL-68 / PVD-43	0.60	11.6	0.51%
TRECHO -143	BL-69 / PVD-48	0.60	13.1	0.48%
TRECHO -144	BL-70 / PVD-48	0.60	13.8	4.44%
TRECHO -145	BL-71 / PVD-47	0.60	13.0	1.43%
TRECHO -146	BL-72 / PVD-47	0.60	12.8	8.01%
TRECHO -147	BL-73 / PVD-45	0.60	16.4	7.45%
TRECHO -148	BL-74 / PVD-45	0.60	19.3	4.44%
TRECHO -149	BL-75 / PVD-38	0.60	11.4	0.65%
TRECHO -150	BL-76 / PVD-38	0.60	13.0	5.68%
TRECHO -151	PVD-36 / BL-77	0.60	9.2	1.01%
TRECHO -152	PVD-36 / BL-78	0.60	9.0	0.51%
TRECHO -153	BL-79 / PVD-35	0.60	10.0	0.60%
TRECHO -154	BL-80 / PVD-35	0.60	10.3	2.15%
TRECHO -155	BL-81 / PVD-66	0.60	8.2	8.49%
TRECHO -156	BL-82 / PVD-66	0.60	8.0	10.96%
TRECHO -157	BL-83 / PVD-35	0.60	10.3	7.12%
TRECHO -158	BL-84 / PVD-35	0.60	10.4	6.94%
TRECHO -159	BL-85 / PVD-63	0.60	9.4	6.51%
TRECHO -160	BL-86 / PVD-63	0.60	10.1	3.50%
TRECHO -161	BL-87 / PVD-63	0.60	11.1	1.29%
TRECHO -162	BL-88 / PVD-63	0.60	11.1	4.43%
TRECHO -163	PVD-53 / BL-89	0.60	11.6	8.89%
TRECHO -164	PVD-53 / BL-90	0.60	11.0	7.33%
TRECHO -165	PVD-53 / BL-91	0.60	12.2	4.97%
TRECHO -166	PVD-53 / BL-92	0.60	12.9	0.97%
TRECHO -167	BL-93 / PVD-52	0.60	8.7	1.98%
TRECHO -168	BL-94 / PVD-52	0.60	9.8	0.46%
TRECHO -169	BL-95 / PVD-52	0.60	8.9	0.51%
TRECHO -170	BL-96 / PVD-52	0.60	9.0	0.52%
TRECHO -171	BL-97 / PVD-51	0.60	9.5	12.98%
TRECHO -172	BL-98 / PVD-51	0.60	10.4	7.13%
TRECHO -173	PVD-49 / BL-99	0.60	11.2	4.62%
TRECHO -174	PVD-49 / BL-100	0.60	11.5	2.67%
TRECHO -175	BL-101 / PVD-50	0.60	5.8	0.55%
TRECHO -176	BL-102 / PVD-50	0.60	6.0	8.03%
TRECHO -177	PVD-49 / BL-103	0.60	13.4	0.61%

TRECHO -178	PVD-49 / BL-104	0.60	11.0	2.42%
TRECHO -179	BL-105 / PVD-21	0.60	9.6	1.76%
TRECHO -180	BL-106 / PVD-21	0.60	8.6	1.87%
TRECHO -181	BL-107 / PVD-22	0.60	5.8	3.63%
TRECHO -182	BL-108 / PVD-22	0.60	6.2	2.95%
TRECHO -183	BL-109 / PVD-24	0.60	7.7	3.35%
TRECHO -184	BL-110 / PVD-24	0.60	8.0	3.49%
TRECHO -185	BL-111 / PVD-31	0.60	9.9	0.57%
TRECHO -186	BL-112 / PVD-31	0.60	10.1	0.52%
TRECHO -187	BL-113 / PVD-32	0.60	9.3	0.40%
TRECHO -188	BL-114 / PVD-32	0.60	9.7	0.39%
TRECHO -189	BL-115 / PVD-57	0.60	8.8	7.00%
TRECHO -190	BL-116 / PVD-57	0.60	8.6	2.95%
TRECHO -191	BL-117 / PVD-61	0.60	8.3	3.08%
TRECHO -192	BL-118 / PVD-61	0.60	8.3	0.49%
TRECHO -193	PVD-59 / BL-119	0.60	19.8	0.42%
TRECHO -194	PVD-59 / BL-120	0.60	19.3	0.79%
TRECHO -195	BL-121 / PVD-19	0.60	8.3	2.57%
TRECHO -196	BL-122 / PVD-19	0.60	8.5	3.10%
TRECHO DISSIPADOR-01	PVD-15 / DISSIPADOR -01	0.80	49.2	7.56%
TRECHO DISSIPADOR-02	PVD-44 / DISSIPADOR -02	0.80	129.4	6.84%

 <p>Engenheiros Civis do Rio de Janeiro Instituto de Engenharia e Arquitetura</p>	<p>Engenharia Civil e</p> <p>Engenharia de Segurança do Trabalho</p> <p>Tel.: (21) 9981-2622</p> <p>E-mail: eng@engcivis.com.br</p> <p>E-mail: engenharia@engcivis.com.br</p> <p>E-mail: seguranca@engcivis.com.br</p> <p>Tel.: 0800-709000 (CIPA) ou 13516142</p>	
	<p>PROJETO DE PAVIMENTAÇÃO</p> <p>PROJETO DE PAVIMENTAÇÃO - VILA RURAL VILA RURAL, FORTOZENCO BARREIRA</p> <p>ORÇAMENTO TABELA DE TUBOS</p>	<p>01/01</p>
	<p>Assinatura:</p> <p>PREFEITURA MUNICIPAL DE CIDADE GAUCHA</p> <p>RUA ANTONIO RIBUSTO DE OLIVEIRA, 2304</p> <p>Assessoria de Engenharia e Arquitetura Rua Antônio Ribusto de Oliveira, 2304 Fone: (51) 3091-1000 FAX: (51) 3091-1001 E-mail: eng@engcivis.com.br</p> <p>Shella Cristina Dias</p> <p>PROJETO</p> <p>ASSINATURA</p>	<p>11/08</p> <p>PROJETO</p> <p>PROJETO DE PAVIMENTAÇÃO</p> <p>PROJETO DE PAVIMENTAÇÃO</p>



LEGENDA

- ARV - ARVORES
- CERCA DE ARAME
- CURVAS DE NIVEL PROJETADAS
- LOTES VIZINHO GEORREFERENCIADO
- VEGETAÇÃO
- CX CONTENÇÃO ÁGUA PLUVIAL EXISTENTE
- CX CONTENÇÃO ÁGUA PLUVIAL EXISTENTE
- PORTEIRA

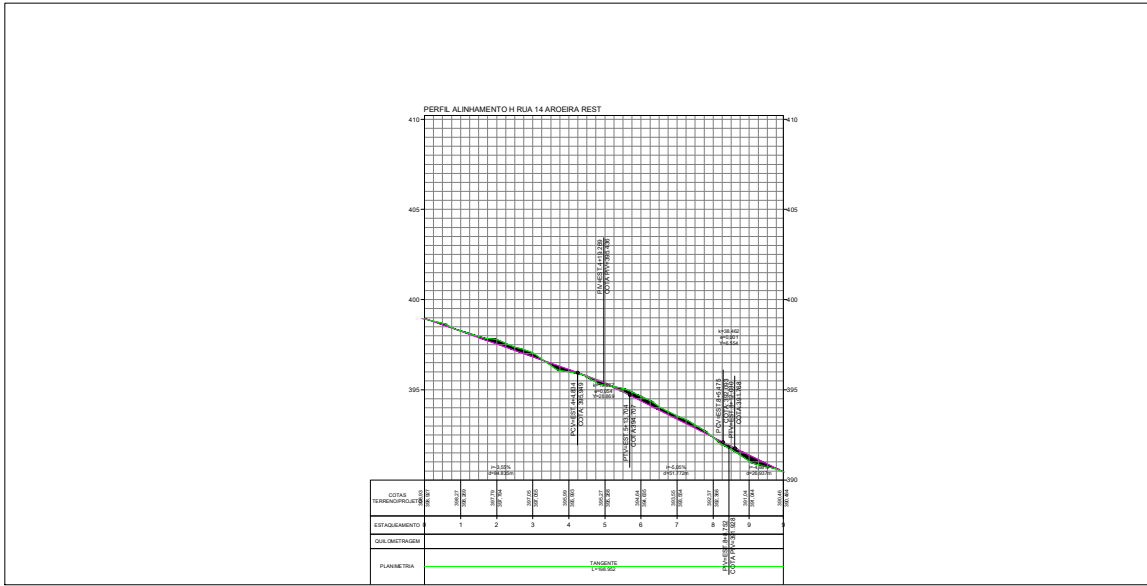
LEGENDA

PLANTA

- ESTRADA PROJETADA
- TALUDE DE CORTE
- TALUDE DE ATERRO
- CURVA INTERMEDIÁRIA
- CURVA MESTRA
- CAIXA DE CONTENÇÃO
- GRAMA (1,00m P/CADA LADO)
- SARDEIA DE CONCRETO
- TUBO DE CONCRETO - B5TC Ø 600mm
- CAIXA COLETORA
- DISSIPADOR
- BOCA DE B5TC Ø600mm

PERFIL

- TERRENO NATURAL
- SUBLEITO
- GREIDE



Engenharia Civil e Engenharia de Segurança do Trabalho

PROJETO DE PAVIMENTAÇÃO

01/01

PREFEITURA MUNICIPAL DE CIDADE GAUCHA

RUA JOSÉ CARLOS KUMBIKOW DE OLIVEIRA, 2304

TERRAPLENAGEM

01/01

Sheila Cristina Dias

01/01/2023